

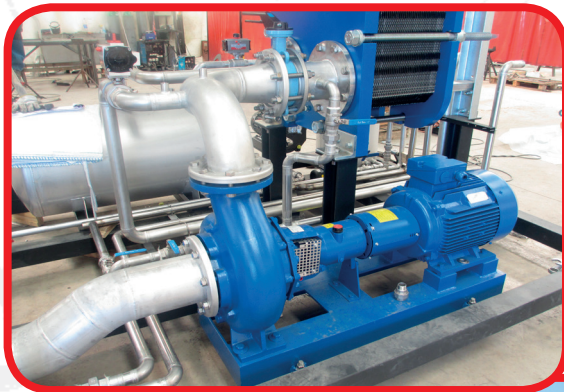
**SALVATORE
ROBUSCHI
POMPE PARMA**

Forced Circulation Evaporator

RB - Ecology and Environment

Vacuum Evaporation

Vacuum evaporation plants are used for the concentration of thermolabile solutions or for the treatment of waste water produced by industries during the different stages of the process.



Application : Forced Circulation Evaporator

PUMP: RBB 125-25C 4C15 C181 7
PERFORMANCE: Flow 165 m³/h – head 15,5 m – NPSH 1 m
LIQUID: acid water with traces of chlorine

The pump is installed in a forced circulation wastewater evaporator to treat industrial wastewater. Its high efficiency enables treatment of effluents that are otherwise difficult to treat, such as brines, oily water, RO rejects, washing waters, etc
Pump is in duplex SAF 2205

The use of the vacuum evaporation technique allows to reduce not only the energy consumption, but also the NPSHa available for the pump.

RB SERIES

Impeller type: **channel**.
Discharge sizes: **from DN 65 to DN 300**.
Maximum working pressure: **10 bar**
Flow rate: **up to 2400 m³ /hr**.
Differential head: **up to 70 m**.
Impeller with special blades geometry for low NPSH and high free passage.

